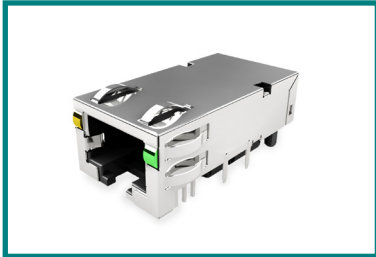
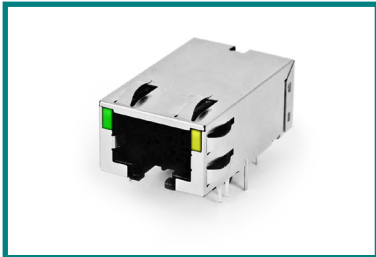




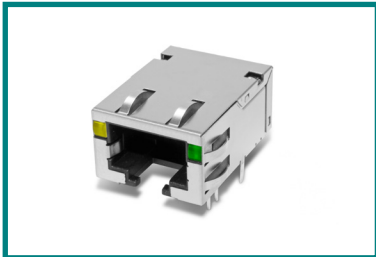
JT5 Series
2XN 10 Gigabit
Thru hole & Press Fit
Pins, Light pipe



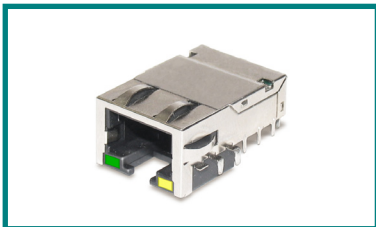
JT3 Series
1X1 10 Gigabit
Offset, LED option,
Tab-Down



JT4 Series
1X1 10 Gigabit
PCI-E Compliant,
LED option, Tab-Down



JTH Series
1X1 10 Gigabit
Low Profile, LED option,
Tab-Down



JT0 Series
1X1 10 Gigabit
Offset, Tab-Down
LED option



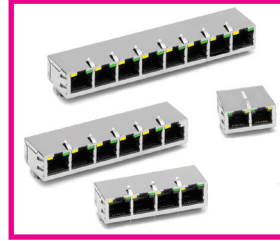
J1N Series
1x4 Gigabit
PoE/PoE+
Low Profile
LED option, Tab Up



J0N Series
1x4 Gigabit
PoE/PoE+ option
LED option,
Tab-Down



JGL Series
1x2 Gigabit
Low-Profile
LED option,
Tab-Up



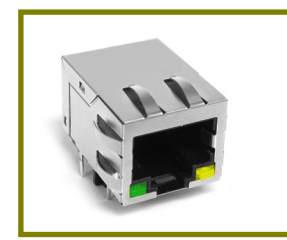
JG0 Series
1XN Gigabit
LED option,
Tab-Up



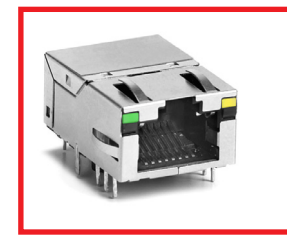
J80 Series
1XN 10/100
LED option,
Tab-Down



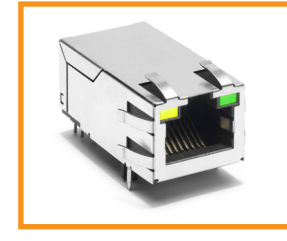
**JOB/JC0/
J20 Series**
2XN 10/100 & Gigabit
PoE/PoE+/UPoE Option
LED option



JKM Series
1x1 Gigabit
Tab-Down
LED option



JOG Series
1X1 Gigabit
Low Profile, Tab-Up
LED option



JK0 Series
1X1 Gigabit
PoE/PoE+ option
LED option, Tab-Up



**J00/J10
JV0/J30 Series**
10/100
THT/SMT option
Tab-Up/Tab-Down
LED option

SELECT CONNECTOR	Select Connector Type	RJ45																
	Number of Ports	One Port (1x1)								1xN (N=2,4,6,8)				2xN (N=2,4,6,8)				
	Locking Tab Up/Down	DOWN				UP				DOWN		UP		N/A				
	PCB Mounting Type	THT	SMT	THT	THT	THT				SMT	THT	THT	THT	THT	THT			
	LEDs Available?	Yes	No	Yes	Yes	Yes	Yes	Yes	Yes	Yes	Yes	Yes	Yes	Yes	Yes	Yes	Yes	Yes
	Select Data Rate	10/100TX	10/100TX	10GTX	100 TX & 1000TX	10/100TX	10/100TX	1000TX	1000TX	10/100TX	10/100TX	1000TX	1000TX	1000TX	10/100TX	1000TX	1000TX	10GTX
	Pulse Part Number	J0	JV	JT	JKM	J1	JP	JK	J0G	J3	J8	JON	JG	J1N	J2	JC	J0B	JT5
ON WWW	Data Sheet Released?	Yes	Yes	Yes	Yes	Yes	Yes	Yes	Yes	Yes	Yes	Yes	Yes	Yes	Yes	Yes	Yes	
	Data Sheet No.	J403	J409	J425	J434	J402	J402	J411	J423	J409	J404	J435	J410	J436	J401	J405	J427/29	J440
Typical Applications		NIC / WAP / Femtocell / Camera & Video systems / Media Converters / Slaves and Drives								Servers / Gateways / Routers				Switches / Routers / Gateways				

NOTES: THT = Through Hole mounted SMT = Surface Mounted

For More Information

Pulse Worldwide Headquarters

12220 World Trade Drive
 San Diego, CA 92128
 U.S.A.

Tel: 858 674 8100
 Fax: 858 674 8262

Pulse Europe

Zeppelinstrasse 15
 71083 Herrenberg
 Germany

Tel: 49 7032 7806 0
 Fax: 49 7032 7806 12

Pulse China Headquarters

B402, Shenzhen Academy of
 Aerospace Technology Bldg.
 10th Kejinan Road
 High-Tech Zone
 Nanshan District
 Shenzhen, PR China 518057

Tel: 86 755 33966678
 Fax: 86 755 33966700

Pulse North China

Room 2704/2705
 Super Ocean Finance Ctr.
 2067 Yan An Road West
 Shanghai 200336
 China

Tel: 86 21 62787060
 Fax: 86 2162786973

Pulse South Asia

135 Joo Seng Road
 #03-02
 PM Industrial Bldg.
 Singapore 368363

Tel: 65 6287 8998
 Fax: 65 6287 8998

Pulse North Asia

3F No. 198, Zhongyuan Road
 Zhongli City
 Taoyuan County (32068)
 Taiwan

Tel: 886 3 4356768
 Fax: 886 3 4356823

Performance warranty of products offered on this data sheet is limited to the parameters specified. Data is subject to change without notice. Other brand and product names mentioned herein may be trademarks or registered trademarks of their respective owners. © Copyright, 2013. Pulse Electronics, Inc. All rights reserved.