

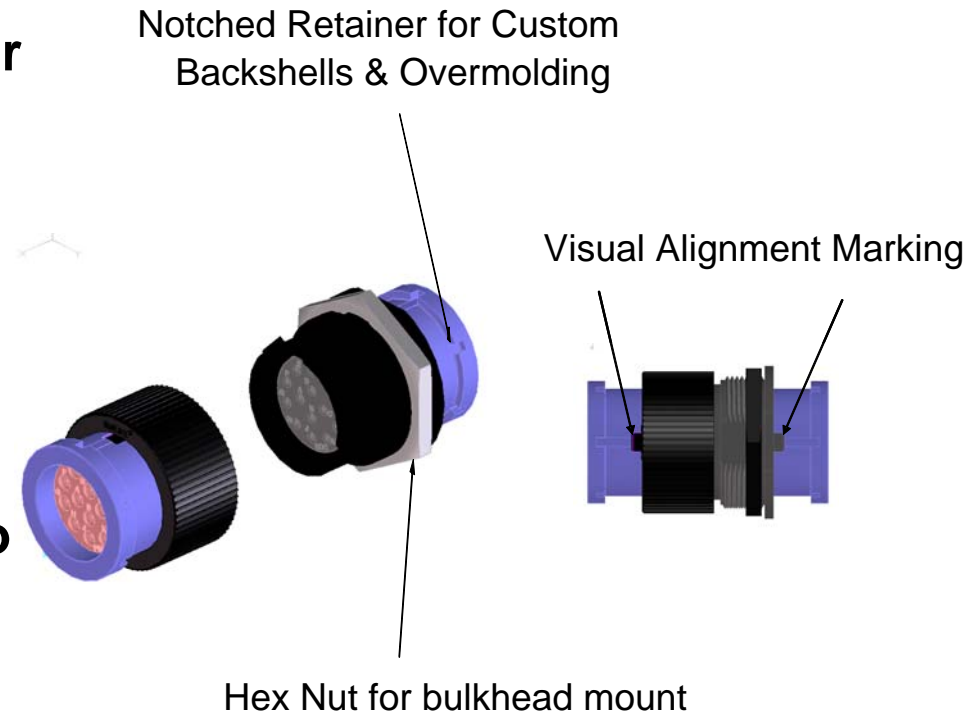
Extra Rugged Circular (XRC) Sealed Plugs and Receptacles



Features and Benefits



- **Heavy-duty circular connector system for high rugged vehicle applications**
- **Drop in replacement for Deutsch HDP**
 - Cross-reference available for shell size 18 and 24
 - Product is intermateable
- **Reduced part numbers due to seal improvements**
 - Each XRC seal accommodates both thicknesses of wire insulation
- **Uses industry standard size pins**
 - Molex offers own version



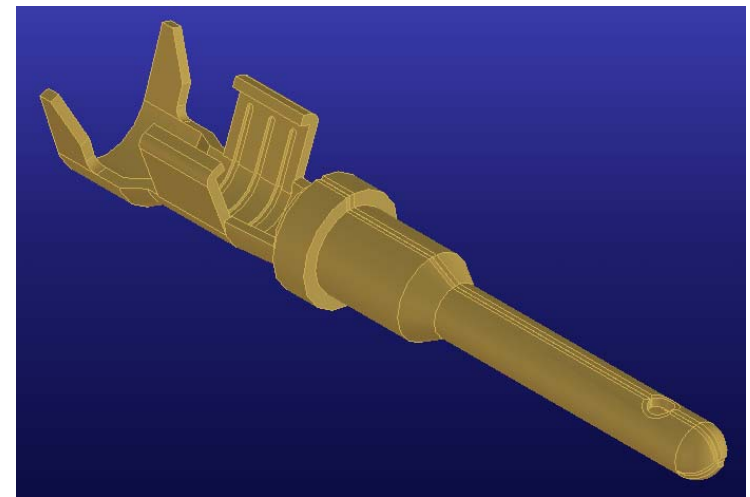
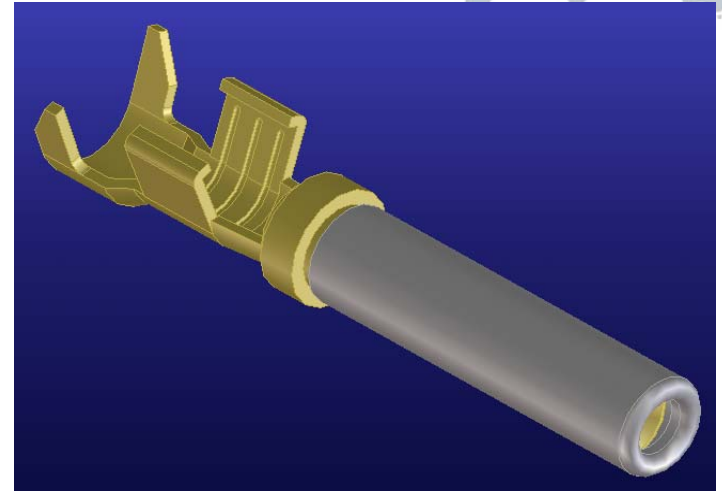
Terminals Features and Benefits

■ Specifications

- Current rating: 13Amps
- Accommodates 14-18awg UL & SAE wire
- Nickel and gold plating

■ Design benefits

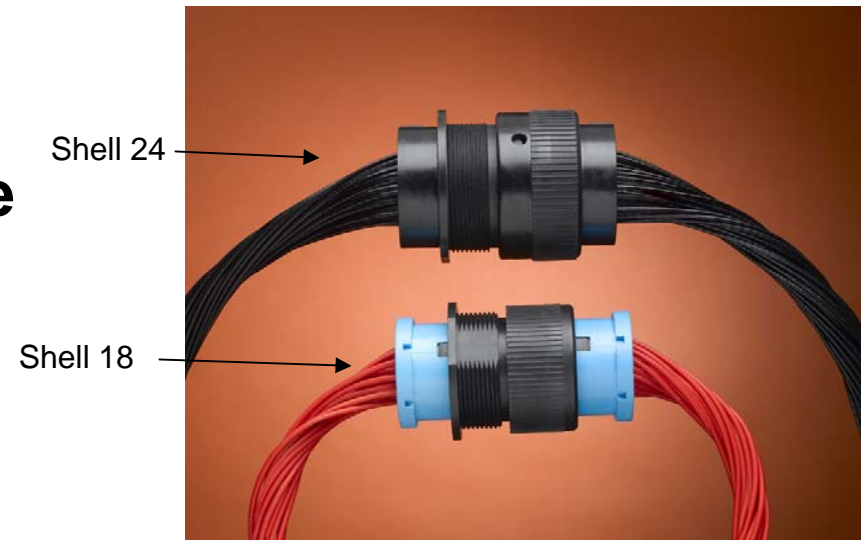
- Stainless steel hood
 - Protects female cantilevers from getting bent
- Pin & Socket design
 - Eliminates terminal alignment when installing wire leads



XRC Supporting Material



- Samples available
- Drawings on Molex.com
- Terminals are compatible with Deutsch tooling
- Product Development Requests
- Independent lab & field testing
 - Molex to Molex
 - Molex to Deutsch
- Deutsch cross reference
 - Terminals
 - Housings



Product Validation



The following tests have been performed to validate the performance of the XRC as compared to others in the field.

- Durability
- Current / Voltage Drop
- High Temperature Exposure
- Thermal Cycling
- Temperature/Humidity Cycling
- Salt Spray
- Immersion
- Fluid Compatibility
- Crimp Pullout
- Housing Retention
- Vibration with Temperature/Humidity