

**HVAC/R  
AFTERMARKET PRODUCTS**

## Have Confidence in the Brands OEMs Trust

OEM quality parts offer greater reliability and performance for replacements.

### WELCOME TO LITTELFUSE

Since 1927, Littelfuse has been developing industry leading circuit control and protection solutions. Today, Littelfuse is a global company with over two billion dollars in revenue that supports major industries around the world. Leading HVAC/R OEMs trust Littelfuse for their critical equipment needs. This brochure outlines our factory direct OEM quality parts for HVAC/R aftermarket replacement.

Take advantage of Littelfuse products and expertise to grow your business as a distributor partner. We look forward to working with you to serve customers and grow our mutual businesses.



### AN EXTENSION OF YOUR TEAM

#### Digital, eCommerce Support

Enhance your website through product images, videos, application content, cross references and more to help your customers select Littelfuse.

#### Customer Support

Knowledgeable customer service representatives who understand your business cycles and seasonal challenges are just a call away.

#### Techline

Live technicians are available to answer your questions and provide:

- Product Cross References
- General Technical Information
- Application Assistance and much more!

#### Technical Support - Fuses/Relays

Phone: (800) 832-3873, option 1

Email/Fuses: TechLine@Littelfuse.com

Email/Relays: Relays@Littelfuse.com

#### Technical Support - Industrial Controls

Phone: (815) 626-5170 x 110

Email: HVAC@Littelfuse.com



## UL Class Fuses

Littelfuse UL Class fuses offer quality overcurrent protection for all kinds of HVAC load conditions. These fuses are chosen over circuit breakers due to their higher amperage in a smaller package, quicker response time, and no calibration requirements.

- Available in both indicating and non-indicating versions
- Best-in-Class current-limiting performance available in Class RK5
- High interrupting rating (up to 300 kA)

[Littelfuse.com/IndustrialPowerFuses](http://Littelfuse.com/IndustrialPowerFuses)



## Class CC and 10 x 38 mm Fuses

UL Listed CC/CD fuses offer extreme current-limitation in a space-saving design and are available up to 60 A. The 10 x 38 mm style fuses offer supplementary protection in a wide range of ampere ratings to meet the needs of a variety of applications.

- Saves 45 %–75 % space
- Fast-acting and time-delay performance
- High-interrupting rating

[Littelfuse.com/IndustrialPowerFuses](http://Littelfuse.com/IndustrialPowerFuses)



## High-Speed Fuses

QS series fuses reduce the energy let-through by up to 70 % over previous generation high-speed semiconductor fuses. Our experts have designed high-performance silver fuse elements that combine with a hardened silica filler to provide enhanced HVAC system protection.

- Less energy wasted during operation
- Laser-etched resistance values to eliminate labels that erode over time
- Universal mounting adapts to wide variety of configurations

[Littelfuse.com/Power-Speed](http://Littelfuse.com/Power-Speed)



## Fuse Blocks and Holders

Enable easy fuse installation and replacement with our extensive line of fuse blocks, fuse holders, and fuse accessories.

- Compact design provides space savings
- Universal and DIN-rail mounting with optional DIN-clip covers
- Snap to release—no tools required

[Littelfuse.com/FuseBlocks](http://Littelfuse.com/FuseBlocks)



## Power Distribution Blocks

Integrated touch-safe covers provide protection against accidental shorting between poles caused by loose wires, tools, or other conductive material. They also safeguard personnel from accidentally contacting energized connectors.

- Meets UL standards
- Space-saving designs
- Mounts to DIN rail or panels

[Littelfuse.com/FuseHolders](http://Littelfuse.com/FuseHolders)



## Surge Protective Devices (SPDs)

Surge protective devices (SPDs) provide equipment protection from transient overvoltage events lasting micro-seconds. By limiting the overvoltage to the equipment during these events, costly damage and downtime can be mitigated.

- Provides thermal protection to eliminate catastrophic failure
- Visual indicator quickly identifies service requirements to avoid loss of protection
- Compact footprint increases design flexibility

[Littelfuse.com/SPD](http://Littelfuse.com/SPD)



## Miniature circuit breakers

For use in residential and commercial applications. Tested and listed according to UL Standard 489 and CSA Standard C22.2 No. 5-02 for miniature circuit breakers and enclosures.

- Can be flush-, surface-, or DIN rail-mounted
- Has lugs at both ends (cable-in/cable-out construction)
- Operate in any position

[Littelfuse.com/MiniatureCircuitBreakers](http://Littelfuse.com/MiniatureCircuitBreakers)



PROTECT

## Time Delay Relays

Protect HVAC/R equipment from damage caused by rapid cycling of compressors. The Littelfuse SSAC line of timers include delay-on-make, delay-on-break, dual function, multifunction, and lockout functions.

- Provides brownout protection and prevents low-voltage start ups
- Encapsulated to guard against shock, vibration, and humidity
- Replaces thousands of competitive models

[Littelfuse.com/Timers](http://Littelfuse.com/Timers)



## Transformers

Engineered to change one ac voltage to another by magnetic induction, heavy-duty transformers are available with primary and secondary voltages between 20 to 500 VA.

- Application-specific designs are available
- Engineered to run more efficiently

[Littelfuse.com/Transformers](http://Littelfuse.com/Transformers)



## Mechanical Relays

Ideal for HVAC applications, general-purpose relays are actuated with an electro-magnetic current, creating a closed circuit.

- Available in industry-standard sizes
- Environmentally friendly design is RoHS Compliant

[Littelfuse.com/MechanicalRelays](http://Littelfuse.com/MechanicalRelays)



## Capacitors

Engineered to boost the current or reduce the power factor to an electrical motor, run capacitors feature single and dual rated values, as well as round or oval case options.

- Movable contacts with heavy duty silver cadmium oxide for long life
- Actuator molded from high arc resistant polyester
- Manual test button directly closes movable contacts without energizing the coil

[Littelfuse.com/MotorRunCapacitors](http://Littelfuse.com/MotorRunCapacitors)



## Contactors

Acting as an on/off switch controlled by thermostats, contactors are designed with consistent silver thickness for increased product life, making them ideal for the demands of commercial and residential HVAC applications.

- Certified by Underwriters Laboratories (UL) to Annex JJ of UL/CSA 60335-2-40 for use with systems employing A2L flammable refrigerants.
- Double E magnet assembly for optimal performance with reduced power use
- One piece terminal design meets NEMA standard for spacing without insulated terminals
- Auxiliary switch part numbers available that fits all Hartland Controls 3-pole contactor

[Littelfuse.com/DefinitePurposeContactors](http://Littelfuse.com/DefinitePurposeContactors)



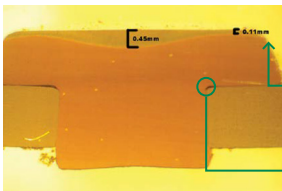
CONTROL

# Stock the Quality Components Your Customers Want



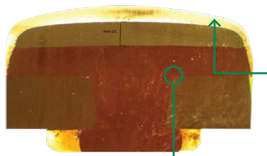
## CHECK FOR CONTACTOR QUALITY

- Double E magnet assembly for optimal performance with reduced power use
- Movable contacts with heavy duty silver cadmium oxide for long life
- Actuator molded from high arc-resistant polyester
- 4-14 aluminum ASG box lug standard
- One piece terminal design meets NEMA standard for spacing without insulated terminals
- Manual test button directly closes movable contacts without energizing the coil



### Competitor contactor construction

- Thin silver content reduces product life and increases risk of welding
- Poor contact staking cause heat buildup and product failure



### Littelfuse contactor advantages

- Consistent silver thickness, edge-to-edge, for increased product life
- Engineered automated staking eliminates heat buildup and reduces product failure



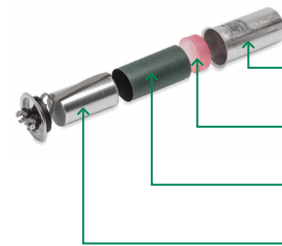
## CHECK FOR CAPACITOR QUALITY

- -40°C to 70°C (-40°F to 158°F) operating temperature
- 60,000 hour life at rated temperature
- Accelerated life test performance:
  - 2000 hours @ 125% rated voltage @ 80°C
- Thick, seven micrometer film for greater reliability and quality
- Vacuum sealed to eliminate leaks and/or contaminants
- 1.5 mm plastic cup to support Mylar\* film rolls
- Nomex\* sleeve to protect and insulate Mylar film rolls
- Tested per EIA-456-A Standards–Industry
- BEST +/-3% tolerance
- 10,000 AFC protected
- UL / CSA / VDE approved



### Competitor capacitor construction

- Uses a 6 micrometer film
- Lack of plastic cup and Nomex sleeve increases product failure



### Littelfuse capacitor advantages

- High-quality, rigid aluminum can for longer life
- Plastic cup supports film rolls
- Nomex sleeve protects and insulates film rolls
- Industry-leading quality with 7 micrometer thick Mylar film rolls for greater reliability

[Littelfuse.com/HVAC](http://Littelfuse.com/HVAC)

For a comprehensive library of resources including datasheets, product manuals, white papers, application guides, demos, online design tools, catalogs, and more, visit [Littelfuse.com/TechnicalResources](http://Littelfuse.com/TechnicalResources)



Littelfuse products are certified to many standards around the world. To check certifications on specific components, please refer to the specific product datasheet on [Littelfuse.com](http://Littelfuse.com).

**Disclaimer Notice** – Information furnished is believed to be accurate and reliable. However, users should independently evaluate the suitability of and test each product selected for their own applications. Littelfuse products are not designed for, and may not be used in, all applications. Read complete Disclaimer Notice at [www.littelfuse.com/product-disclaimer](http://www.littelfuse.com/product-disclaimer).